

Alpha User Manual

16 litre Non Vacuum (N) Autoclave



Instructions for use

Please read these instructions before using the autoclave.

Keep these "Instructions for use" in a safe place close by the unit for future reference.

Service Helpline: Telephone: 01254 844 116
(UK only - 24hr)

e.mail: customerservice@prestigemmedical.co.uk

Prestige Medical Service staff are available to provide advice and assistance during normal office hours. To avoid delays when making contact please have the units Model and Serial Numbers at hand. These can be found on the rating plate located at the rear of the unit or on the bezel inside the door.

For additional information visit
www.prestigemmedical.co.uk

UK Customers

Prestige Medical Limited
East House, Duttons Way,
Shadsworth Business Park,
Blackburn BB1 2QR

Tel : +44 (0) 1254 682 622
Fax : +44 (0) 1254 682 606

www.prestigemmedical.co.uk
sales@prestigemmedical.co.uk

Overseas Customers

Contact your local distributor. In case of doubt contact Prestige Medical.

Contents.

Section	Page
1 Introduction	3
2 Operating Symbols, Displays and Controls	4
3 Operation	6
4 Essential Information	8
5 Routine Care and Maintenance	9
6 Trouble Shooting	10
7 Recovery Sequences	11
8 Additional Information	12
9 Warranty	13
10 Loading the Autoclave	13
11 Printer and data logger Instructions	13
12 Specification	14
13 Cycle Profiles	15
14 Water Quality	15
15 Daily Record Sheet	16

Destination Kit

Date of purchase

Model no.

Vessel rating plate (duplicate)

Serial no.



Prestige Medical Limited
East House, Duttons Way,
Shadsworth Business Park,
Blackburn BB1 2QR

Tel : +44 (0) 1254 682 622
Fax : +44 (0) 1254 682 606

www.prestigemmedical.co.uk
sales@prestigemmedical.co.uk

Registered in England
Reg No. 2826793

Section 1: Introduction

Thank you for choosing the Prestige Medical Alpha Autoclave. This machine is fitted with sophisticated control software and will automatically adjust the cycle time dependent on the mass of load used. This will ensure the optimum sterilizing and drying conditions for all loads.

Non-vacuum cycles use the thermodynamic air displacement system and employ an 'open door' drying system.

An "Auto-cycle start" option is included which allows the user to programme the time of day at which the selected cycle should start.

Before unpacking, refer to the "Manual Handling" section on page 12, section 8.

Whilst unpacking check the unit for transit damage. If damage is found, please report this to the shipping agent immediately, in writing, and then notify your dealer.

Product contents comprise of the following: -

- Autoclave with internal furniture.
- Instructions for Use and warranty card.
- Performance Test Certificate and Certificate of Conformance for pressure vessel (all UK models).
- Installation sheet.
- Written Scheme of Examination (UK models).
- Waste water container.
- Printer or Data Logger (if applicable).

All Customers, when you receive your Alpha autoclave ensure that you complete and return your Warranty Registration Card.

Types of load and loading.

Alpha autoclaves are designed to sterilize instruments, utensils and other items as defined by the European Standard EN13060.

The autoclaves operate automatically with 134°C and 121°C sterilizing temperatures (with or without drying).

For a full list of sterilizing cycles and times refer to Section 13.

WARNING!

Refer to the instrument manufacturer to ensure the instruments suitability for autoclaving and the maximum temperature they can withstand.

A "responsible person" must qualify other loads as suitable. Refer to "Additional Information" in Section 8. Refer to "Technical Specifications", Section 12, for the maximum instrument load for the autoclave.

All instruments must be cleaned appropriately prior to sterilizing.

When placing items on a tray ensure that they do not touch each other and that the load does not touch other trays or the chamber in any way.

Always use the lifting device when removing trays from the autoclave as they may be hot.

Do not use an unprotected hand to hold hot trays.

Section 2: Operating symbols, displays and controls

The following descriptions refer to the symbols, controls and displays used on the **ALPHA** range of autoclaves.



IMPORTANT: Read Operating Instructions before use.



Hot parts.
Do Not Touch.



Fill water tank when LED illuminated (Maximum fill level is S3 opposite).



Do not use tap water (S2 below).
For acceptable water quality refer to Section 13.

Symbols:

S1 Cycle status graphic segments.

General controls / Operations:

Note: The function is selected when the LED adjacent to the button is illuminated.

- A Standby / Ready button.
- B Cycle start button.
- C Door open button.
- D Select time/date/cycle counter.
- E Adjust time/date settings (E1/E2)
- F Select Non-vacuum cycles.
- G Select "Additional drying".
- H Fuses (located behind access panel).
- I Printer socket
- J Main door (not shown)
- K Fresh water tank drain.
- L Water fill.
- L Air filter.
- M Rating plate.



Cycle controls.



Non-vacuum cycle for unwrapped solid instruments, **without** drying.



Non-vacuum cycle for unwrapped solid instruments, **with** drying.

The 121°C or 134°C led will be illuminated to show which cycle is selected.



134°C. Non-vacuum cycle without drying.



134°C. Non-vacuum cycle with drying.

Examples below show:-

Press H to select "Additional Drying"



Additional drying.

AFTER EVERY CYCLE THE UNIT RETURNS TO THE DEFAULT CYCLE.



Default for Non-Vacuum units



Display Options.

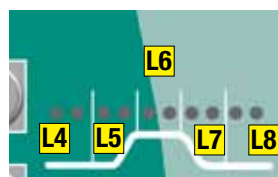


L1 Display for "Time" "Date" & "Cycle counter". The normal display mode is time. The date or cycle counter can be selected by pressing the button D adjacent to the display. The selection is valid until a cycle is completed or until the unit is returned to standby mode, at which point the display will revert to the current time.

L2 Display for "Temperature"

L3 Display for "Pressure".

The following show the cycle status:



L4 Cycle started.

L5 Heating and air bleed.

L6 Sterilizing.

L7 Depressurisation / drying.

L8 Cycle complete.

Section 3: Operation

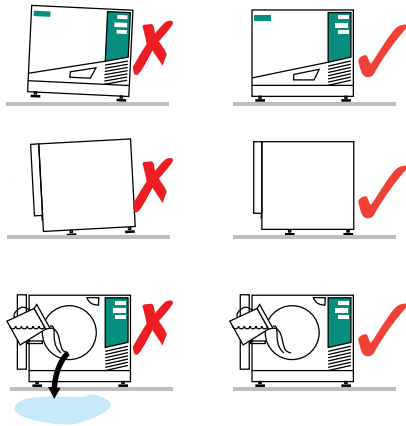


Please take time to read these instructions before using the autoclave. It is essential that the operator is correctly trained and a “Responsible Person” has been assigned for the management of the autoclave. By following these simple step-by-step instructions you can ensure your instruments are correctly sterilized every time.

1. Installation.

Ensure the unit is placed on a strong, flat, level & heat resistant surface.

To check if the unit is level, pour half a cup of water into the chamber. The water should flow towards the hole at the rear of the chamber, not out of the front.



WARNING!

The autoclave is heavy; at least two people will be needed to lift it.

2. Connection.

Plug the unit into the mains outlet socket of the correct type & rating. See rating plate (O). Push the on/off switch on the front of the unit.

After a few seconds the LED next to button (A) illuminates and the internal heater operates to control the internal temperature at a set value.

WARNING!

The mains outlet **MUST BE EARTHED (GROUNDED)**.
The mains plug should always be easily accessible as it is to be relied upon as “the means of disconnection”.

3. Single use water system.



This unit has a “single use” water system designed to prevent the recycling of any contaminants, which may be present on the instruments being sterilized.

Ensure the “waste water container” is checked regularly to prevent overflowing. The container should be emptied when the waste water level reaches the “Max” line.

To empty the container, undo the screw cap and carefully remove the steam-condensing coil, which passes through the cap. Place on a heat resistant surface whilst emptying the container.

Use the carry handle to support the container when emptying. Replace the steam-condensing coil and cap; ensuring it is screwed on securely.

Note: Before using for the first time, and after emptying, always add cold (tap) water until the level reaches the minimum level mark.

The waste water container can be located in any convenient place provided it is at a lower height than the autoclave, although care should be taken that it cannot be knocked over.

WARNING!

Waste water and steam condensing coil may be hot.
Care should be taken at all times.

4. Setting date and time.

Date and time are set in the following sequence.

Note: This unit uses a 24 hour clock.

Year (tens): Year (hundreds): Month: Day: Minutes: Hours.

- Set the autoclave in “Ready Mode” by pressing ready button (A). The LED next to button (A) will then go out.
- Press and hold button (D) for 5 seconds.
- Set year (tens) by pressing button (D) up and (E1) down. Press button (E2) to accept.
- Set year (hundreds); Month; Day; Minutes; hours; by pressing button (D) up and (E1) down. Press button (E2) to accept for each.
- The unit returns to “Ready Mode” when the hours are accepted.

5. Ready.

Press button (A) to set the autoclave into “Ready Mode”. The LED next to button (A) will go out.

Note: When in “Ready Mode”, the boiler and chamber are kept warm.

6. Water fill – DO NOT USE TAP WATER.



Before using the autoclave for the first time fill with water.

Press button (C) to open the door. Pour water into the fill spout (M) until it reaches the “Maximum line” (S3). Do not overfill. The water capacity is 3.7 litres. When the low water indicator illuminates, top up with water.

Always use de-ionised, distilled or sterile water as recommended (see page 19).

NEVER USE TAP WATER. THIS WILL INVALIDATE THE WARRANTY.

7. Loading.

Refer to "Loading the Autoclave" at Section 14, page 15 and "Specifications" on page 14 for the maximum permissible load.

Failure to follow instructions may cause the unit to malfunction and result in an unsuccessful cycle. Before loading, ensure instruments are cleaned and rinsed thoroughly.

Always use the instrument trays or racks, which are supplied or are available as recommended accessories through your supplier.

Load instruments so that they do not touch other instruments or the chamber.



8. Door closing.

Once the trays are in place, close the door by pushing until a "click" is heard. The LED next to the door open button (C) will then flash for a period of 20 seconds during which time entry into the unit is restricted. This 'dwell' period is used to ensure correct pressure sensing readings are made prior to a cycle being initiated. Access to the unit can be made once this period is complete.

9. Cycle options.

After each cycle the unit will return to the default cycle.

Press G to scroll round all the 121°C and 134°C cycles



Non-vacuum cycle for unwrapped solid instruments, **with** drying. Either 121°C /15½min. or 134°/3½min.



Non-vacuum cycle for unwrapped solid instruments, **without** drying. Either 121°C /15½min. or 134°/3½min.

Press H to select "Additional Drying".



Additional drying.

This option can be added before or after a cycle.

(i) To select before starting a cycle:

- (i) Press button (H) once. L4 illuminates to indicate 5 additional minutes.
- (ii) Press (H) a second time. L4 & L5 illuminate to indicate 10 additional minutes.
- (iii) Press (H) a third time. L4 L5 & L6 illuminate to indicate 15 additional minutes.
- (iv) Press (H) a fourth time. This cancels additional drying.
- (v) Select, then start the required cycle. See "10".

(ii) To select after a cycle has been completed:

- (i) With the door closed press and hold button (H) for 10seconds. L7 flashes to indicate 5 minute drying in progress.
- (ii) Press button (H) once. L4 illuminates to indicate 5 additional minutes. Now press and hold button (H) for 10seconds. L4 and L5 are illuminated. Then L7 flashes to indicate 10minute drying in progress.
- (iii) Press button (H) twice. L4 & L5 illuminated to indicate 10 additional minutes. Now press and hold button (H) for 10seconds. L4 L5 and L6 are illuminated. L7 now flashes to indicate 15minute drying in progress.

10. Start cycle.

Press button (B) to start a fully automatic cycle. A visual display shows the stages of the cycle:

Stage 1	Cycle started (L4)
Stage 2	Heating and air bleed (L5)
Stage 3	Sterilizing (L6)
Stage 4	Depressurisation / drying (L7)
Stage 5	Cycle completed (L8)

11. Opening door.

At the end of a cycle a buzzer sounds 3 times. Press button (C) to open the door, allowing access to the load.

Auto-cycle start.

The unit can be programmed to enable any cycle to be started at any time of the day when the unit is unattended. This option is recommended particularly when the operator performs "Air leak detection test".

- Set the autoclave in "Standby Mode" by pressing ready button (A). The LED next to button (A) will illuminate.
- Press and hold button (D) for 6 seconds and release. The time display (L1) will flash with the default time of 06.30 being displayed.
- Press (E2) to accept. If another time is required for the auto-cycle start, change minutes then hours; by pressing button (D) up and (E1) down. Accept by pressing button (E2).
- The unit returns to "Ready Mode" and the LED to the left of the clock symbol continues to flash.
- Select the required sterilizing cycle using buttons (F), (G) and (H).
- Load the instruments in the chamber and close the door.
- Press the start button (B). The door LED (C) and the start LED (B) both flash. The clock symbol LED is still flashing.
- The selected cycle will start when the programmed start time is reached. The clock symbol LED flashes until the cycle is completed.
- To abort a timed cycle (before the cycle starts) press the "Standby button" (A).

Section 4: Essential information

To ensure that the autoclave continues to operate correctly, it is important to adhere to the following points and to carry out the necessary care and maintenance procedures as specified.

This product is not a washing / cleaning machine.

Do ensure that.....

- ... you read and follow these Instructions for Use.
- ... the load is suitable for sterilizing and the cycle selected.
- ... the load can be sterilized at the selected temperature.
- ... the load has been cleaned.
- ... the load has been rinsed thoroughly in clean water prior to sterilization to avoid any chemical residues left after cleaning contaminating the autoclave.
- ... when placing instruments on trays, ensure that they are placed on the ribs of the tray (to help drainage), they must not touch each other and must not interfere with other trays or the chamber above.
- ... only distilled, de-ionised or sterile water is used (as recommended on page 19).
- ... the autoclave is in a draught free area.
- ... the autoclave is not installed in an enclosed cupboard space.
- ... the door is left ajar when not in use.
- ... you quote model/serial number (which are located on the lower left hand side of the front bezel, behind the door moulding and also on the rear case just above the mains power cord entry) and date of purchase in all correspondence.
- ... only qualified personnel regularly service the autoclave.

It is recommended that a Chemical Indicator strip be used every cycle to verify that the sterilizing cycle is effective. If the Chemical Indicator strip fails to change colour repeat the cycle. If it still fails to change colour then arrange for a service.

Do not....

- ... lose this handbook.
- ... add any chemicals whatsoever to the water.
- ... attempt to sterilize volatile substances, toxic materials or other unsuitable loads. (Refer to your "Responsible Person" for advice)
- ... place the autoclave in direct sunlight.
- ... place the autoclave on heat sensitive surfaces.
- ... use inappropriate cleaning materials.
- ... drop or abuse the autoclave.
- ... use in areas of risk associated with flammable materials or gases.
- ... remove the casing or attempt to service or repair the autoclave.

Disposal

WEEE Statement

(Waste, Electrical and Electronic Equipment)

The WEEE directive places an obligation on all EU-based manufacturers and importers to take-back electronic products at the end of their useful life.

Prestige Medical Limited accepts its responsibility to finance the cost of treatment of redundant WEEE in accordance with the specific recycling requirements.

The symbol (shown below) is present on all Prestige Medical products, which indicates that the product must NOT be disposed of with other waste. Instead it is the user's responsibility to dispose of their waste electrical and electronic equipment by handing it over to an approved reprocessor, or by returning it to Prestige Medical for reprocessing. For more information about where you can send your waste equipment for recycling, please contact your local city office or Prestige Medical.



Section 5: Routine care and maintenance

WARNING!

Disconnect the autoclave from the mains power supply before cleaning.

DAILY MAINTENANCE

Gasket

THE GASKET MUST BE CLEANED ON A DAILY BASIS, BEFORE USING THE AUTOCLAVE.



Wipe exposed surface of the gasket and the surface of the vessel with warm soapy water using a lint free damp cloth.

Wipe both the gasket and the vessel again with water using a lint free damp cloth to remove any residual soap.

EVERY 250 CYCLES.

Clean the autoclave using Autoclave cleaning kit (Part No. 289138).

WARNING

Failure to perform these procedures may result in the unit showing UOD1 on the display (UOD1 indicates that the unit may have been contaminated and could fail to operate correctly).

Exterior surfaces (as required).

Exterior surfaces should be cleaned with warm soapy water using a damp cloth.

For persistent marks, use a gentle cream cleaner.

Fresh water tank / Waste water container.

On a monthly basis, fully drain the water tank and leave overnight (use Autoclave cleaning kit Part No. 289138). Drain, then refill with fresh water. Repeat this operation twice more to remove any residue.

Always use de-ionised, distilled or sterile water as recommended. NEVER USE TAP WATER.

Routine maintenance.

Annually replace the water filters.

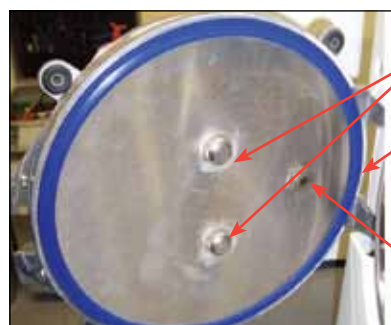
Gasket replacement

Should the gasket develop a persistent leak it should be removed, cleaned thoroughly in warm soapy water and shaken dry. Wiping with a lint-free cloth is acceptable (Other materials may lead to contamination of the gasket with fibres).

The door gasket plate must also be cleaned.

If the leak persists you should obtain and fit a new gasket.

To remove the gasket, undo the two thumb-nuts (309070) in the centre of the gasket plate.



Thumb-Nuts

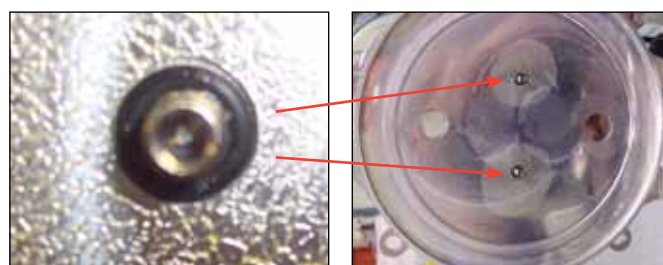
Sealing Lip - ensure the gasket is orientated correctly

Entry port plug

Remove the plate/gasket assembly and then remove the gasket from the plate.

CAUTION: Ensure the gasket is located the right way around on the plate, the lip should face outwards.

During re-assembly, place new black sealing washers (supplied with the gasket) in the machined recesses in the door casting.



Ensure that the entry port plug aligns with the hole in the cast lid.

Prior to tightening the two thumb-nuts ensure that the gasket is correctly seated on the gasket plate and in the door recess.

DO NOT over-tighten the thumb-nuts as this may damage the thread.

Section 6: Trouble shooting

If the machine does not complete a sterilizing cycle, a visual and audible indication will be given. The reason can then be determined by reference to the guide below. The recovery sequence allows access to any instruments within the autoclave and is the first step when rectifying the condition. **In the unlikely event that a cycle fails to complete, instruments should be reprocessed as they may not be sterile.**

User Message	Cause	Remedy.
UOD1 and UOD2	Unit contamination or gasket wear.	Conduct routine maintenance procedures. Replace gasket. If the condition persists an engineer call-out may be required.
Low water LED (E2)	Insufficient water to run a cycle.	Press button (A) twice. Top up with water to mark (S3).
“door” illuminates on display (L2)	Cycle start button pressed whilst door is open or door micro-switch requires adjustment.	If door closed but door LED (C) not illuminated - push on door to see if LED can be illuminated. If door open, close door and try again. If fault occurs during a cycle – follow Recovery sequence “i”
01	Power failure during a cycle or power to unit switched off prior to cycle completion.	Recovery sequence “i” Check power supply – repeat the cycle.
b02	Sterilizing Temperature out of range. Contamination of Sensors. Contamination or wear of the gasket.	Recovery sequence “i”. Clean gasket and chamber face then repeat the cycle. If fault persists engineer call-out may be required.
d02	Probe temperature difference out of range.	Recovery sequence “i”. Conduct routine maintenance procedures. Clean gasket and chamber face then repeat the cycle. If fault persists engineer call-out may be required.
t02	Clock error.	Recovery sequence “i”. Check & reset the clock – repeat the cycle. If fault persists engineer call-out required.
p02	Sterilizing Pressure out of range.	Recovery sequence “i”. Clean gasket and chamber face then repeat the cycle. If fault persists engineer call-out required.
03	Air bleed has not been successful.	Recovery sequence “i”. Clean gasket and chamber face then repeat the cycle.
07	Sensor fault – Boiler thermistor.	Recovery Sequence “ii” – Repeat cycle. If fault persists engineer call-out may be required.
08	Sensor fault – Pressure transducer.	Recovery Sequence “ii” – Repeat cycle. If fault persists engineer call-out may be required.
10	Water in the boiler.	Recovery Sequence “iii” – Repeat cycle.
13	Water fill time out.	Recovery sequence “i”. Drain water out of the fresh water tank and refill with de-ionised, distilled or sterile water. Repeat the cycle.
14	Sensor fault – Chamber probe.	Recovery Sequence “ii” – Repeat cycle. If fault persists engineer call-out may be required.
15	System Leak.	Recovery Sequence “ii” – Clean gasket and chamber face then repeat the cycle. If fault persists engineer call-out may be required.
UOD3	Contamination or wear of the gasket.	Clean or change gasket. If fault persists Engineer call-out required.

As non-warranty related calls can be expensive it is advisable to ensure that all consumable items have been replaced or cleaned as appropriate, and that the water quality is as described in Section 13 before contacting Prestige Medical Ltd.

Section 7: Recovery sequence (allows instruments to be removed from the unit).

Recovery Sequence (allows instruments to be removed from the unit).		
Recovery Sequence "i"	Recovery Sequence "ii"	Recovery Sequence "iii"
Press button (A) Stabilize (no flashing or bleeping)	Press button (A) Stabilize (no flashing or bleeping)	Press button (A) Stabilize (no flashing or bleeping)
Service required.	NB: Cannot proceed. Switch off at mains supply.	Press button (A) to enter "Ready Mode"
Press button (A) "Recover"	Service required.	

The Recovery sequence (depending on where the fault occurs) will flush the water from the boiler and eventually complete the cycle with a continuous bleeping to indicate recovery is completed.

Important.

Before restarting a cycle, check that the mains plug is fully inserted into the mains outlet socket and the outlet is of the earthed/grounded type.

Should all power be lost the door cannot be opened until power is restored and pressure returned to ambient.

Should an internal power failure occur, the door cannot be opened until: -

1. The unit has cooled down to atmospheric pressure. Access can then be made using the supplied tool.
2. A service has been carried out.

In the event of failure of an indication device a service will be required to correct the condition.

Should a safety feature operate, unplug the unit and call for a service – do not attempt to correct the fault.

Primary safety features:

Two primary features have been fitted – a pressure release valve and a boiler over temperature safety cut out.

IMPORTANT NOTE ON EMERGENCY DOOR OPENING PROCEDURES.

If the door interlock lever does not fully release during door opening and the door led has gone out, light pressure on the door will re-illuminate the door open led. It will then be possible to open the door in the normal manner using the door open button.

Door opening – Power loss.

If the machine has suffered a loss of power and it is essential to open the machine to remove instruments, the following procedure should be followed. This should only be performed by the nominated responsible person: -

1. Disconnect the unit from the mains supply.
2. Allow the machine to cool down to room temperature.
3. Remove the protective white protective cap on the top of the machine.
4. Using the hook on the special tool, release any pressure/vacuum inside the vessel by hooking the ring on the pressure relief valve and pulling this towards you. As shown opposite.
5. Insert the straight end of the special tool into the interlock lever release guide hole and push inwards. If the tool starts to buckle at the preformed strain relief repeat from 3 above.

See Photograph opposite.

DO NOT ATTEMPT TO OPEN THE VESSEL IF PRESSURISED.

ONLY USE THE TOOL PROVIDED AND FOLLOW THE INSTRUCTIONS ABOVE TO GAIN ACCESS TO THE MACHINE.



Section 8: Additional information

Operator:

The person assigned to use the autoclave.

Responsible person:

The person who is responsible for the management of the equipment, load assignment, care and maintenance. This person is also responsible for ensuring that all applicable Health & Safety Regulations are applied including those relating to the pressure vessel.

This person must verify that only suitably qualified persons undertake repair and maintenance work other than that described under "Routine Care and Maintenance" within this handbook.

Qualified person:

A person who is qualified by training or experience to a recognised level in respect of the work to be undertaken.

Service:

Calibration and maintenance as required.

Manual handling:

Due to the weight of the unit two people are required when unpacking or moving the product.

UNPACKING.

When lifting the unit out of the box ensure there is one person on either side of the unit. Lift out of the box and place on the work surface.

POSITIONING.

Start lifting by holding the unit below the front bezel (large plastic moulding). As clearance is gained, lift at the other corners. Place in position, and release in the reverse order to lifting. NOTE Always drain the water tank before moving. Before moving always allow 30 minutes after use for the unit to cool down.

Cleaning materials:

Mild washing up liquid. Non-abrasive cream cleaner. Disinfectant diluted in water. Autoclave Cleaning Kit 289138.

Product decontamination.

Should the unit require repair, it must be decontaminated in accordance with a recognised procedure prior to return or on-site repair. A statement of equipment contamination status must be available with the product.

Details of a suitable procedure are available on request from Prestige Medical Ltd.

Approvals:

Approvals are all model specific. However, the following standards apply in whole or part:

- Medical Devices Directive (MDD 93/42/EEC)
- Electro Magnetic Compatibility Directive.
- European Sterilizer Standard (EN13060)
- Pressure vessel to ASME Section 8.
- BS EN 61010 Parts 1 and 2
- UL/CSA 3101

Spares:

Only those spare parts supplied or specified by Prestige Medical should be used in the maintenance of the autoclave. Use of unauthorised parts will invalidate any warranty and may adversely affect the performance or safety of the unit.

Accessories / Consumables

Printer	(Part Nos.	279519 Europe
		279520 UK
		279521 Australia):

Data Logger	279565
--------------------	---------------

Optional and can be fitted by the user.

Printer roll (Part No.279505): Ten replacement rolls.

Furniture:

16 litre tray (Part No.309066):

Tray lifter (Part No.279007):

Door tool (Part No.309068):

Door plate thumb screw (Part No.279300):

Set of 4 gaskets (Part number 279571):

"O" Ring door (Part No.279100):

Waste Water Container (Part No.279503)

Container for single use water.

TST strips (Part No. 259277)

Autoclave cleaner (Part No.289138):

For cleaning the autoclave to ensure continued operation.

3 Tray Rack (Part No.289132)

Set of two 10 instrument clip trays (Part No. 309081)

Set of twelve 10 instrument clip trays (Part No. 309082)

Set of two 3 instrument clip trays (Part No.276396A)

Section 9: Warranty (UK only)

Prestige Medical Ltd will, in the first twelve months from the date of purchase (or 18 months from the date of factory despatch – whichever is first), repair or replace free of charge any parts* inclusive of labour which prove to be defective in workmanship and / or materials.

In the following twelve months Prestige Medical Ltd will replace free of charge any parts which prove to be defective in workmanship and / or materials **exclusive** of labour.

This warranty cover is dependent on authorised servicing of the unit at least every 12 months and that Prestige Medical Ltd received the warranty card within 3 months of installation.

Prestige Medical Ltd will not be liable in the event that the purchaser has failed to adhere to the instructions contained herein or if the autoclave has been abused, interfered with, altered, repaired or serviced by any unauthorised party. This may result in the protection provided by the equipment being impaired.

* This warranty **excludes** the door gasket, all internal furniture and consumables.

Consumer's statutory rights are not affected.

The Prestige Medical Ltd policy is one of continuous development and as such reserves the right to change the specification of the models and items illustrated and described herein at any time.

Section 10: Loading the autoclave

Loading has a significant impact on how the autoclave performs.

The maximum permissible loads are as follows: -

6 kg for Non Vacuum Cycles

Always use the instrument trays or racks, which are supplied.

Load instruments so that they do not touch other instruments.

When loading the trays into the rack use the top rungs of the rack first and work down.

Section 11: Printer instruction

Power on procedure

Connect the printer to the power supply and switch on at the mains. The LED light will illuminate on the printer. Connect the printer to the autoclave with the supplied cable. The printer connection at the autoclave is connector J - see page 4

Replacing Paper Roll – Part Number **279505**.

If the paper roll needs replacing, open the paper cup lid and remove the remaining paper using the button, **do not pull paper through the printer mechanism**. Reel off a few centimetres from a new roll and check that the end has a clean straight edge. Slide the leading edge of the paper through the paper entry slot, with the leading edge feeding forwards from the bottom of the roll, until you feel resistance. Press the button and feed paper through the paper exit slot. Sit the new paper in the paper cup and close the lid.

Should the paper become creased or out of line when feeding in a new roll, cut the end off the paper roll, feed out the creased paper using the button, and reload ensuring the paper has a clean straight edge.

Status LED.

The printer incorporates an LED indicator to report its condition. If there is a fault the LED will flash in sequence. The fault can be identified by counting the number of flashes.

LED Indication.	Condition	Solution.
On	Printer On	-
Off	Printer Off or Asleep	-
* * *	Paper Out	Fit new paper
** ** *	Thermal head too hot	Allow head to cool

Place the printer on the worktop at the side of the autoclave.

Do not place the printer on the top of the autoclave.

Make sure the paper is kept away from hot surfaces such as the dump pipe etc.

Store the printouts in folders away from direct or indirect sunlight.

Data logger instructions

Refer to the instructions supplied with the data logger for setting up and operating the data logger.

Section 12: Specification

Chamber Capacities	16litre
Overall product width	480mm.
Overall product height	410mm.
Overall product length	440mm.
Unpacked weight	42Kg. (Max)
Chamber Diameter	250mm.
Chamber lengths	330mm.
Max. Instrument length	290mm.
Max. load	6 kg
Sterilizing temp/time.	134°C/3½mins 134°C/18mins. 121°C/15½mins
Operating pressure (Minimum)	2.05bar (gauge).
Voltage/Wattage	230v. /2200W
Frequency	50 – 60 Hz.

NB. The overall cycle time will increase as the mains supply voltage decreases.

Chamber component materials.

Vessel:	Stainless Steel – 304 –S15
Boiler:	Aluminium – LM25
Door:	Aluminium – ASME SB26 356.0 T6
Door Plate:	Stainless Steel – 304 –S15

Fuses:

Located at the rear of the unit under the access panel I.



WARNING



Disconnect the autoclave from the mains power supply before changing fuses.
Only qualified personnel should replace fuses.

Fuse type:

M12A 32x6.3mm. Ceramic sand filled (230v)

Mains plug top fuse (user replaceable)

F13A to BS1362 UK only.

Rating: All products are rated for intermittent use, continuously.

Heaters: Cast into the boiler.
Internal heater.

Temperature cut out:

Bi-metallic type rated at 180°C. with automatic reset.

Pressure release valve:

Operates at 2.9bar. Accumulation is <10%.

Maximum single fault temperature:

143°C determined by the pressure release valve.

Over voltage category: Group II

Pollution degree: Group II

Insulation: Class I.

Environmental conditions:

Indoor use at an altitude of up to 2,000m.

Ambient temperature range +10°C to +40°C

Maximum relative humidity 80% for temperatures up to 30°C, decreasing linearly to 50% at 40°C.

Mains supply voltage range 207 to 254volts.

Drying performance maybe affected by local environmental conditions.

Safety shutdown:

The machine is fitted with an automatic thermal reset mechanism. In the event of the boiler overheating (for example due to accidental overload), the unit will power down. After approx. 10 minutes, power will automatically be restored and the display will show Error 01. The load will need to be re-processed, ie start the cycle again.

Storage:

When leaving the unit standing idle for any length of time, switch mains off & drain the water tank especially if there is a possibility of the room temperature dropping below freezing point.

Packaging:

Packing materials used have been selected for ease of recycling. Please ensure you use the correct disposal system for disposal of packing materials.

Maximum water usage:

450mls per cycle (typical).

Maximum power used:

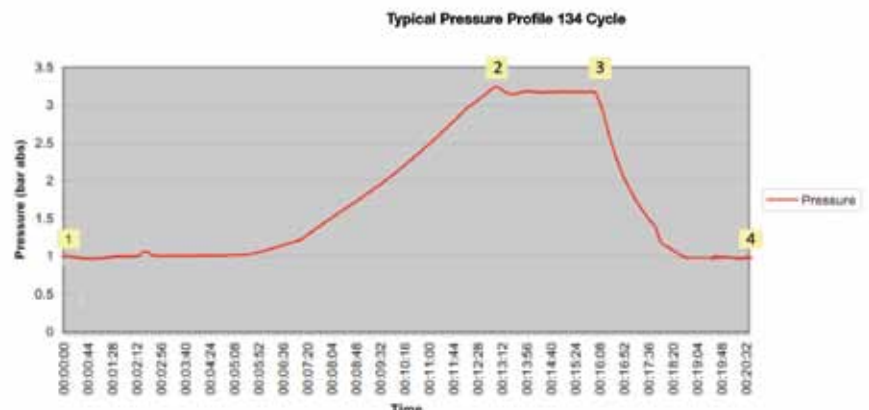
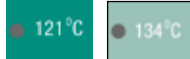
16litre = 1.18kwh

LEQ sound level = 60db.

Section 13:

Cycle profiles

The profile below is for the cycles 121°C and 134°C.



Programme Step	Time min:sec	Temperature (Measured Value)	Pressure (Measured Value)	Cycle Identification.
START	00:00			Figures in bold.
1 to 2	11:00 & 11:00 Typical		Point 2 3.04 bar abs & 2.05 bar abs.	● 134°C
2 to 3	03:30 & 15:30 Fixed	134.0 to 137.0°C. 121.0 to 124.0°C.	3.04 bar abs. to 3.32 bar abs. 2.05 bar abs. to 2.25 bar abs.	Figures in Red
3 to 4	02:30 & 03:30 Typical			● 121°C
END	17:30 & 27:30 Typical			

Section 14: Water quality

Must be suitable to produce steam in accordance with international standards.

Example specification for clean steam		
Determinant	Value	Recommended test for compliance
Based on sterilized water for Injections BP:		
Acid or Alkalinity.	NQ	BP test. Tests for pH are not an acceptable substitute.
Ammonium	0.2mg/litre	BP test or other suitable method
Oxidisable substances.	NQ	BP test.
Calcium and Magnesium.	NQ	BP test. Tests for hardness are not an acceptable substitute.
Heavy Metals.	0.1mg/litre	BP test. Tests for individual elements are not an acceptable substitute.
Chloride	0.5mg/litre	BP test or other suitable method.
Nitrate	0.2mg/litre	BP test or other suitable method.
Sulphate	NQ	BP test.
Residue on evaporation	30mg/litre	BP test. Conductivity measurement is not an acceptable substitute.
Pyrogens	0.25EU/ml	BP test.
Based on EN 285:		
Phosphate	0.1mg/litre	Any suitable method.
Silicate.	0.1mg/litre	Any suitable method.
Routine monitoring only:		
Electrical Conductivity at 25°C	35µS/cm	
NQ = Not Quantified; BP = British Pharmacopeia; EU = Endotoxin unit. (Consideration should be given to single shot type sterilizers, where water is not returned to the reservoir at the end of the cycle).		

USE OF WATER OUTSIDE THE ABOVE SPECIFICATION MAY INVALIDATE THE MACHINE WARRANTY.

Section 15: Daily record sheet - Alpha Autoclave

If printer fitted, staple print outs to the sheet

[illegible]

For Engineer Assistance call the Helpline **01254 844 116** e-mail: **customerservice@prestigemedical.co.uk**
Always quote your Model details, Serial Number and date of purchase when contacting Prestige Medical or your Supplier.
(See page 2 of this manual).